

Tuskers
of
Kruger National Park

Region: Mopani - version 7

OVERVIEW OF THE TUSKERS IN KRUGER NATIONAL PARK

Document: Tuskers of Kruger NP (region: Mopani) version 7
Updated: October 20175

Region: Mopani (Halfway Letaba - Phalaborwa - halfway to Shingwedzi)

Purpose of this document is to help you identifying Tuskers you might see in the Kruger NP

Thanks to all people who contributed to this document with their photos.
You will find detailed photos (if available) of the characteristics of the Tuskers like earmarks and tusks.

If you like to see more pictures and impressions of the tuskers you can use this link to my website.

www.tuskersofafrica.com

I hope this will help you with identifying these wonderful creatures of South-Africa.

In case you meet one or more of these Tuskers please send photos to me by using these email addresses:

tuskers@zeelandnet.nl

tuskers2@zeelandnet.nl

tuskers3@zeelandnet.nl

tuskers4@zeelandnet.nl

tuskers5@zeelandnet.nl

This will help to keep this document and the website up-to-date.

With kindly regards,
Aat Vuik
The Netherlands

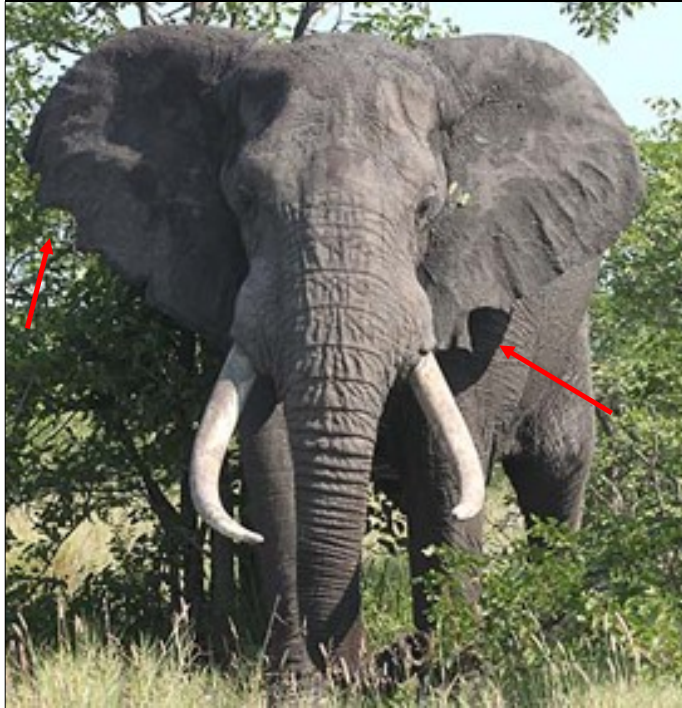
OVERVIEW OF THE TUSKERS IN KRUGER NATIONAL PARK

Tuskers in this document:

Name	Page
HLAMVU	4
KALEKA	5
KUMBA	6
MADZOPFURINI	7
MANYELETI	8
NGODZI	9
NTOMBAZANA	10
NWAMBU	11
SHABAKHADZI	12
TIHONGONYENI	13
TSENDE	14
TSHANGA	15

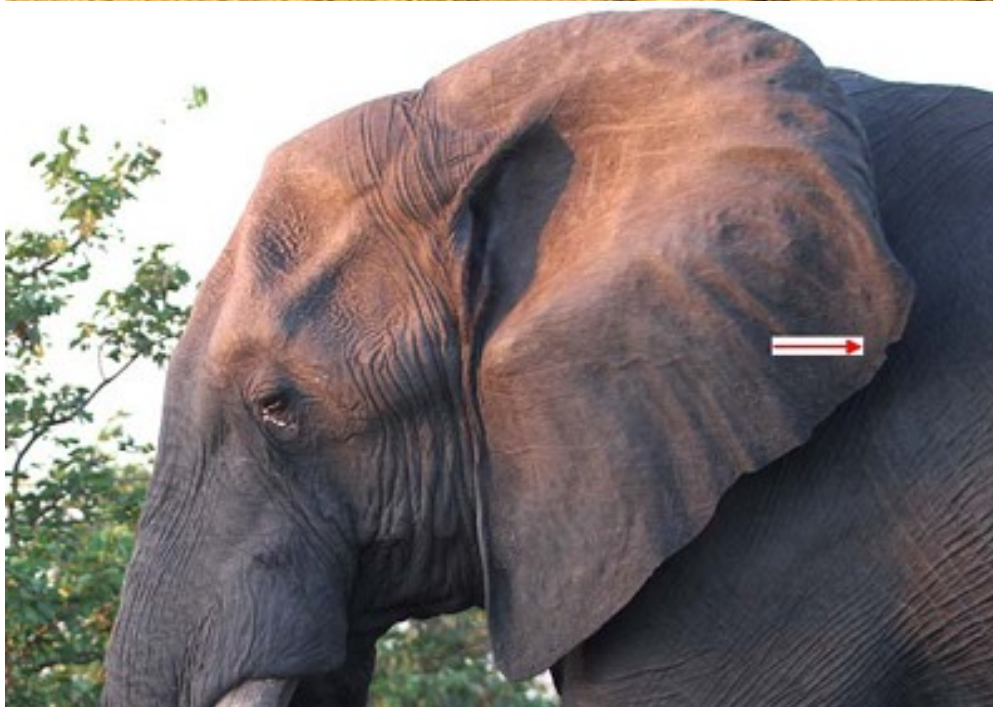
OVERVIEW OF THE TUSKERS IN KRUGER NATIONAL PARK

Name	HLAMVU
Characteristics:	V-shaped notch in left ear at the lower part of the earlobe. Both tusks are curved inwards. Notches at the right ear center and top.
Range	Mopani – South of Shingwedzi



OVERVIEW OF THE TUSKERS IN KRUGER NATIONAL PARK

Name	KALEKA
Characteristics	A small V-shaped notch in upper part of left ear. Right ear is clean. Right tusk more straight and longer than left
Range	Mopani - Letaba



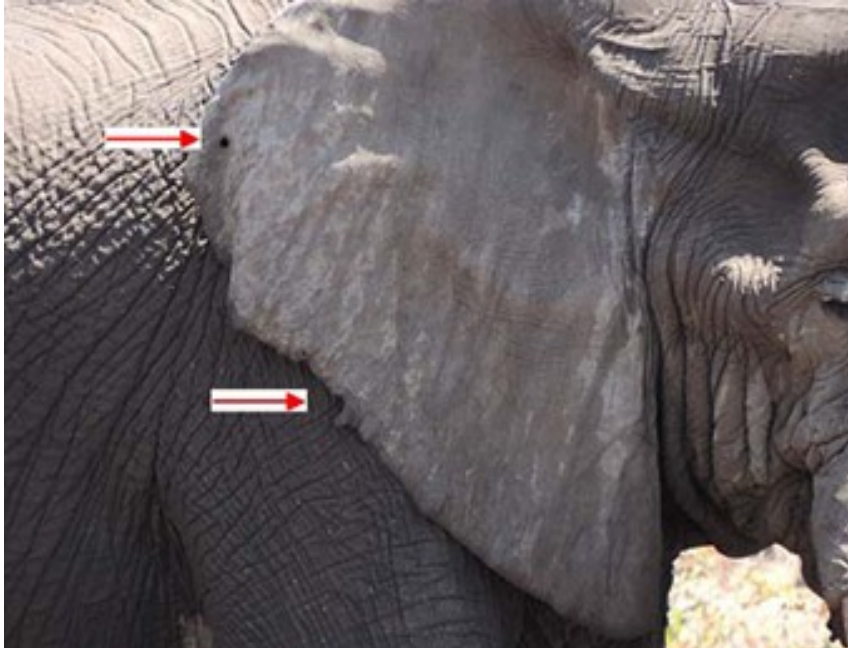
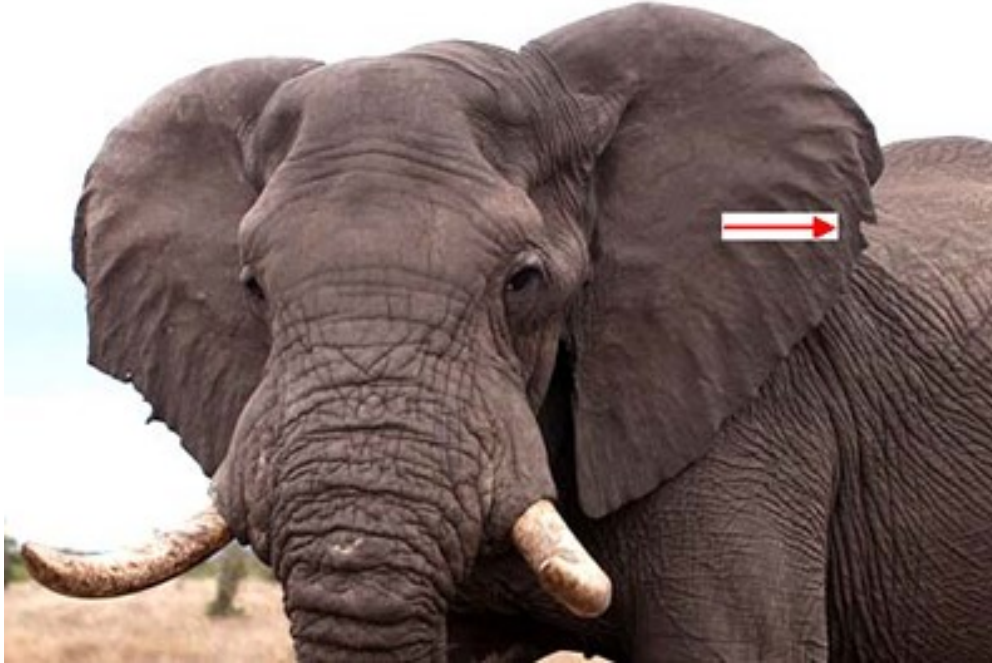
OVERVIEW OF THE TUSKERS IN KRUGER NATIONAL PARK

Name	KUMBA
Characteristics	Tusks are almost equal in length, tip of right tusk broken. Left ear: A small piece of loose skin. Right ear: Two holes (center and top)
Range	Mopani - Letaba



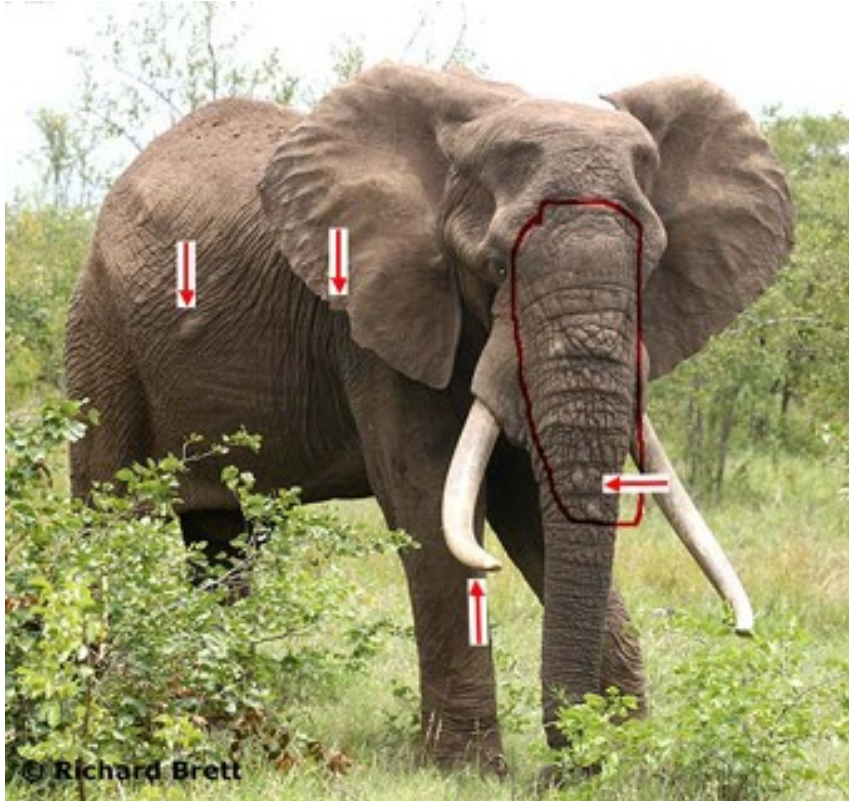
OVERVIEW OF THE TUSKERS IN KRUGER NATIONAL PARK

Name	MADZOPFURINI
Characteristics:	Left ear, at the top there is a small notch with a small piece of loose, Right ear: small notch and a small hole. Both tusks are curving inwards. Some thickened skin growth at the trunk.
Range	Mopani - Shingwedzi



OVERVIEW OF THE TUSKERS IN KRUGER NATIONAL PARK

Name	MANYELETI
Characteristics:	Left ear: notch at lower part, Right ear: small notches and small hole near the center. Both tusks are curved inwards
Range	Mopani - Letaba



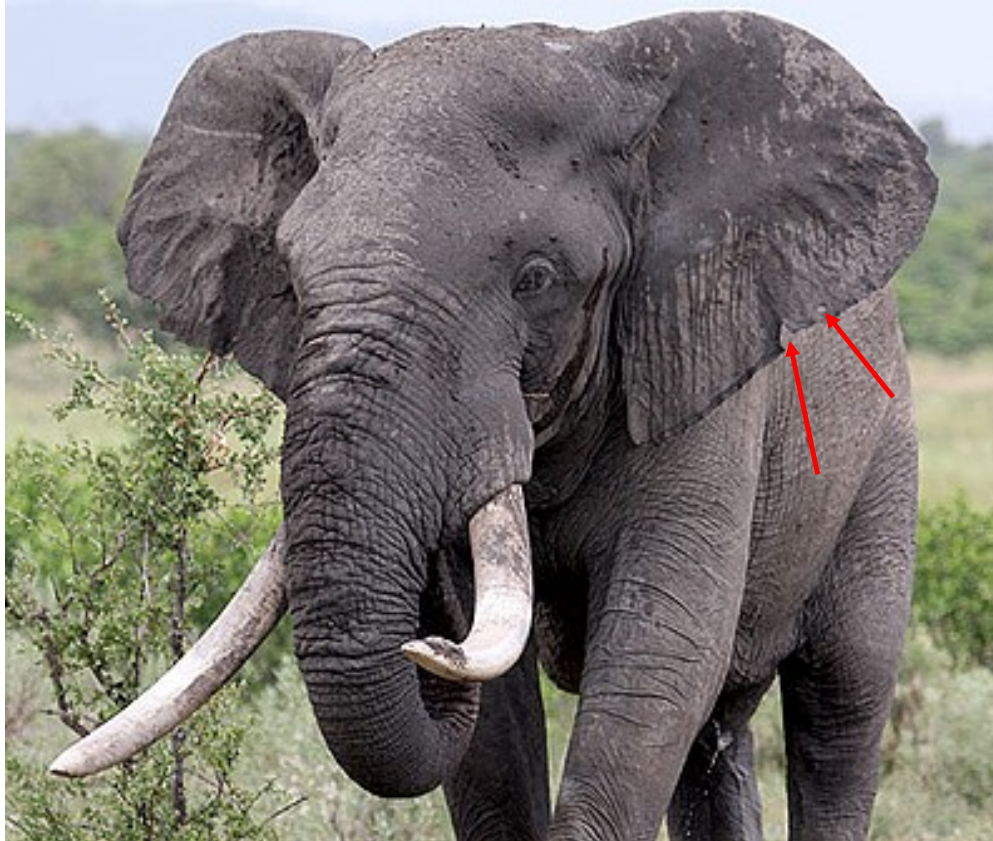
OVERVIEW OF THE TUSKERS IN KRUGER NATIONAL PARK

Name	NGODZI
Characteristics:	Left ear: Small v-shaped notch at the upper part and a very small holes beneath the notch. Righth ear clean. Right tusk longer then left one.
Range	Mopani - Letaba



OVERVIEW OF THE TUSKERS IN KRUGER NATIONAL PARK

Name	NTOMBAZANA
Characteristics:	Small V shaped notch in left ear and about 10cm above this notch he has a hole. Some small notches in right ear near the centre of his ear lobe. Left tusk more curved then right one.
Range	Mopani - Letaba



OVERVIEW OF THE TUSKERS IN KRUGER NATIONAL PARK

Name	NWAMBU
Characteristics:	Right ear: U-shaped notch and small loose piece of skin (center), left ear: small piece of loose skin (center) Tusks: almost same length, widely spread and left a bit more curved
Range	Mopani



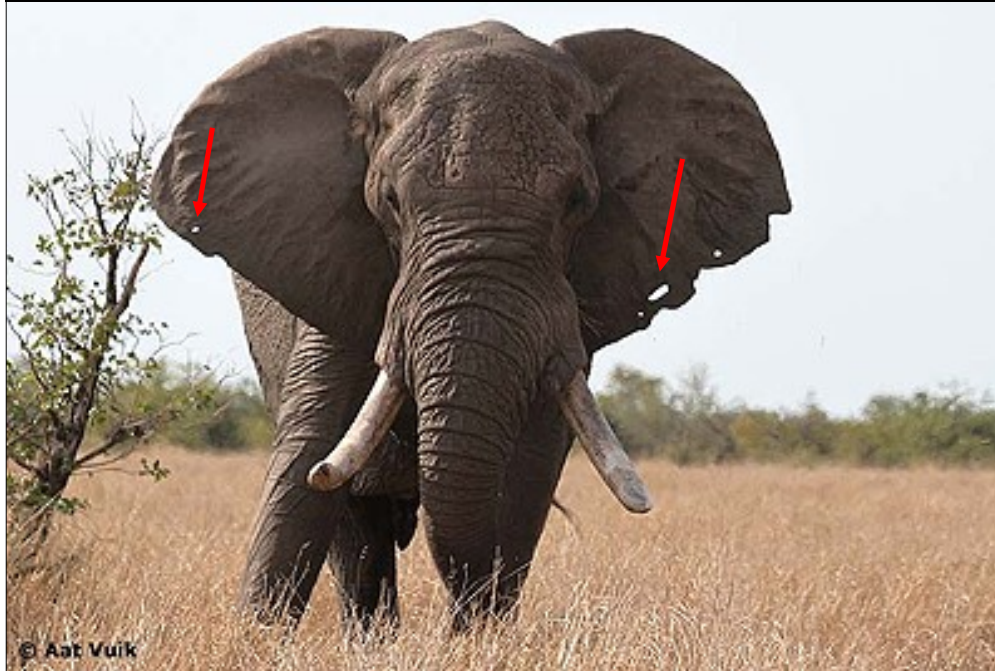
OVERVIEW OF THE TUSKERS IN KRUGER NATIONAL PARK

Name	SHABAKHADZI
Characteristics:	Classic shaped tusks. Big hole in top of left ear
Range	Mopani



OVERVIEW OF THE TUSKERS IN KRUGER NATIONAL PARK

Name	TIHONGONYENI
Characteristics:	Right ear, small hole near the center. Left ear, 3 wide notches and 3 holes, two at the lower part and one near the center of the ear. Right tusks pointing upwards, left tusk more straight
Range	Mopani - Shingwedzi



OVERVIEW OF THE TUSKERS IN KRUGER NATIONAL PARK

Name	TSENDE
Characteristics:	Tusks are almost equal in length. Left ear: 3 small holes near the center and 1 hole at the lower Part. Right ear: Clean
Range	Mopani - Shingwedzi



OVERVIEW OF THE TUSKERS IN KRUGER NATIONAL PARK

Name	TSHANGA
Characteristics:	Tusks are almost equal in length, widely splayed. Left ear: Hole in the lower part and 2 small holes near the center. The 2 small holes are not always good visible because of dust/mud Right ear: Two holes in the lower part (1 is very small) and a small notch near the center
Range	Mopani - Shingwedzi



