

Tuskers
of
Kruger National Park

Region: North - version 7

OVERVIEW OF THE TUSKERS IN KRUGER NATIONAL PARK

Document: Tuskers of Kruger NP (region: North) version 7
Updated: October 2017

Region: North (Babalala - North)

Purpose of this document is to help you identifying Tuskers you might see in the Kruger NP

Thanks to all people who contributed to this document with their photos.
You will find detailed photos (if available) of the characteristics of the Tuskers like earmarks and tusks.

If you like to see more pictures and impressions of the tuskers you can use this link to my website.

www.tuskersofafrica.com

I hope this will help you with identifying these wonderful creatures of South-Africa.

In case you meet one or more of these Tuskers please send photos to me by using these email addresses:

tuskers@zeelandnet.nl

tuskers2@zeelandnet.nl

tuskers3@zeelandnet.nl

tuskers4@zeelandnet.nl

tuskers5@zeelandnet.nl

This will help to keep this document and the website up-to-date.

With kindly regards,
Aat Vuik
The Netherlands

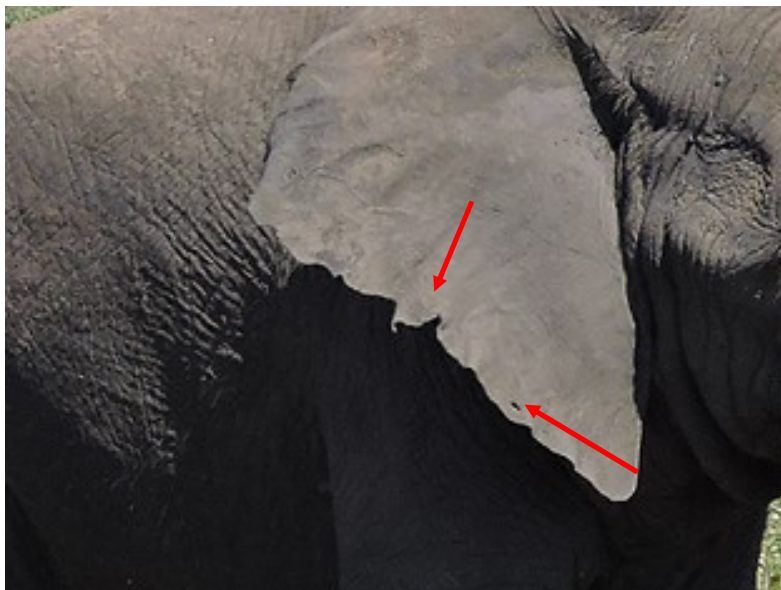
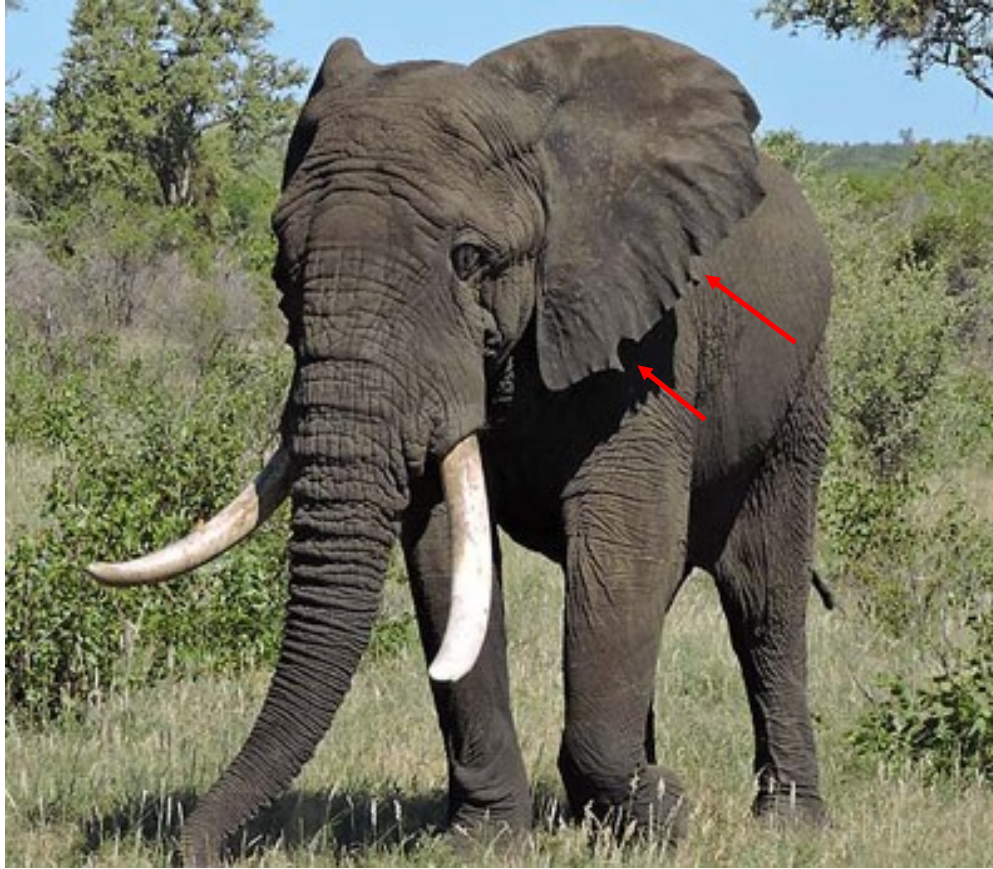
OVERVIEW OF THE TUSKERS IN KRUGER NATIONAL PARK

Tuskers in this document:

Name	Page
DZUNDZWINI	4
MASHIKIRI	5
MAWAWI	6
SHASHANGA	7

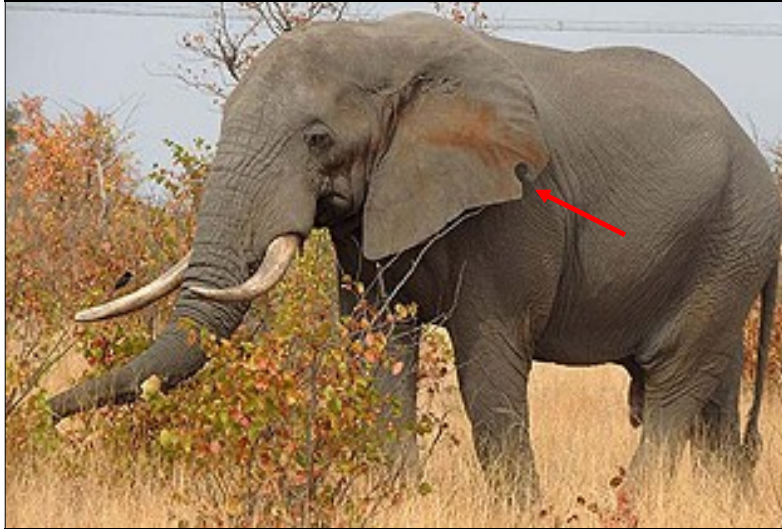
OVERVIEW OF THE TUSKERS IN KRUGER NATIONAL PARK

Name	DZUNDZWINI
Characteristics:	Both tusks are almost equal in length, thick, right tusk pointing more upwards. Right ear: Small notch and hole in the lower part. Left ear a U- and V-shaped notch in the lower part
Range	Babalala – Punda Maria



OVERVIEW OF THE TUSKERS IN KRUGER NATIONAL PARK

Name	MASHIKIRI
Characteristics:	Big notch in left ear, right ear is clean. Tusks are almost equal in length, left a bit more curved than right
Range	Punda Maria



OVERVIEW OF THE TUSKERS IN KRUGER NATIONAL PARK

Name	MAWAWI
Characteristics:	Right ear: Small notches, Left ear: Small notches and small hole at the top. Tusks: Curved upwards, right tusk has been broken in the past
Range	Shingwedzi – Punda Maria



OVERVIEW OF THE TUSKERS IN KRUGER NATIONAL PARK

Name	SHASHANGA
Characteristics:	Left ear: small notch near the centre and a v-shaped notch near the bottom. Right ear: some small notches. Has only one tusk (left) curved in a classic way.
Range	Punda Maria



