

Tuskers  
of  
Kruger National Park

Region: Satara - version 7

## ***OVERVIEW OF THE TUSKERS IN KRUGER NATIONAL PARK***

Document: Tuskers of Kruger NP (region: Satara) version 7  
Updated: October 2017

Region: Satara (Tshokwane – Olifants)

Purpose of this document is to help you identifying Tuskers you might see in the Kruger NP

Thanks to all people who contributed to this document with their photos.  
You will find detailed photos (if available) of the characteristics of the Tuskers like earmarks and tusks.

If you like to see more pictures and impressions of the tuskers you can use this link to my website.

[www.tuskersofafrica.com](http://www.tuskersofafrica.com)

I hope this will help you with identifying these wonderful creatures of South-Africa.

In case you meet one or more of these Tuskers please send photos to me by using these email addresses:

[tuskers@zeelandnet.nl](mailto:tuskers@zeelandnet.nl)

[tuskers2@zeelandnet.nl](mailto:tuskers2@zeelandnet.nl)

[tuskers3@zeelandnet.nl](mailto:tuskers3@zeelandnet.nl)

[tuskers4@zeelandnet.nl](mailto:tuskers4@zeelandnet.nl)

[tuskers5@zeelandnet.nl](mailto:tuskers5@zeelandnet.nl)

This will help to keep this document and the website up-to-date.

With kindly regards,  
Aat Vuik  
The Netherlands

**OVERVIEW OF THE TUSKERS IN KRUGER NATIONAL PARK**

Tuskers in this document:

<b>Name</b>	<b>Page</b>
<b>GIRIVANA</b>	4
<b>MATIMBA</b>	5
<b>MAVUMBYE</b>	6
<b>MBAZO</b>	7
<b>MSHATU</b>	8
<b>NSEMANI</b>	9
<b>NWANETSI</b>	10
<b>NWATIMBUTI</b>	11
<b>SHIBOTWANA</b>	12
<b>XIPEMBANE</b>	13

***OVERVIEW OF THE TUSKERS IN KRUGER NATIONAL PARK***

Name	<b>GIRIVANA</b>
Characteristics:	Thick left tusk, bowed and curved upwards. Right tusk is very short , has been broken.
Range	Satara



***OVERVIEW OF THE TUSKERS IN KRUGER NATIONAL PARK***

Name	<b>MATIMBA</b>
Characteristics:	Tusker (cow). Both tusks almost equal in length. Clean right ear, a hole in the lower side of the left ear.
Range	Satara



## ***OVERVIEW OF THE TUSKERS IN KRUGER NATIONAL PARK***

Name	<b>MAVUMBYE</b>
Characteristics:	Right ear is "floppy", two smaller notches in the left ear. Both tusks curved in- and upwards and almost equal in length
Range	Satara



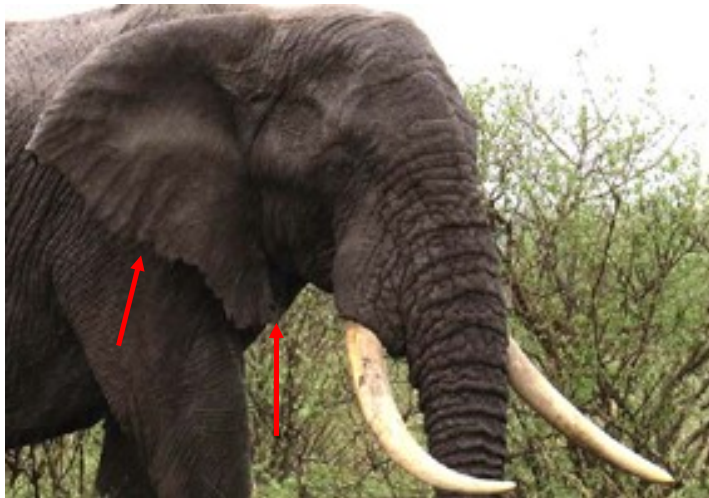
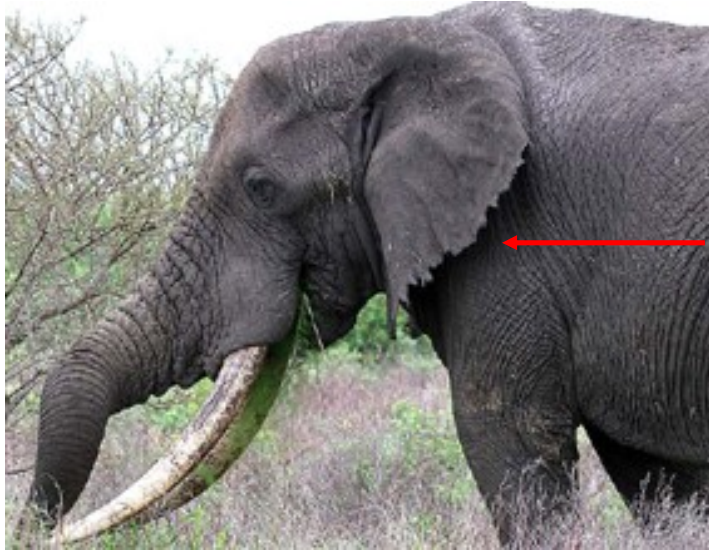
## *OVERVIEW OF THE TUSKERS IN KRUGER NATIONAL PARK*

Name	<b>MBAZO</b>
Characteristics:	Clean ears. The left tusk is short and curved upwards. The right tusk is long and almost straight, curved at the end
Range	Olifants - Balule - Bangu - Satara



***OVERVIEW OF THE TUSKERS IN KRUGER NATIONAL PARK***

Name	<b>MSHATU</b>
Characteristics:	Right ear: Ragged and hole in lower section, Left ear: Ragged
Tusks:	Thick, classically shaped and almost equal in length
Range	Satara - Olifants





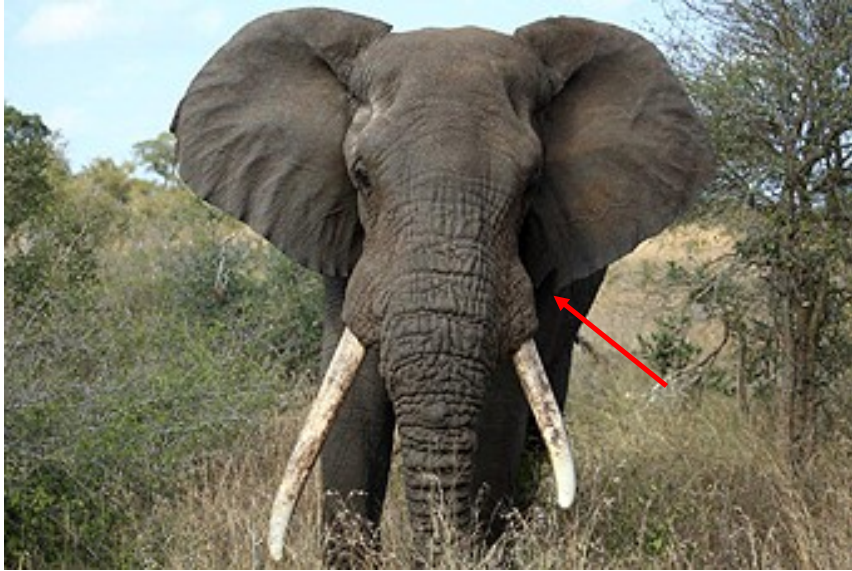
## OVERVIEW OF THE TUSKERS IN KRUGER NATIONAL PARK

Name	<b>NSEMANI</b>
Characteristics:	Both tusks equal in length and classically shaped. Right ear: Mainly clean. Left ear: small hole near the center and small notch
Range	Satara



***OVERVIEW OF THE TUSKERS IN KRUGER NATIONAL PARK***

Name	<b>NWANETSI</b>
Characteristics:	Left ear: V-shaped notch at bottom of earlobe, right ear: clean. Right tusk longer than left one
Range	Satara



## ***OVERVIEW OF THE TUSKERS IN KRUGER NATIONAL PARK***

Name	<b>XIPEMBANE</b>
Characteristics:	Left ear: Notch with loose piece of skin and a hole in the lower part. Right ear: Mainly clean. Tusks: Left tusk more straight, right tusk curved. Left tusk a bit longer than right one.
Range	Olifants

