

Tuskers
of
Kruger National Park

Region: South - version 7

OVERVIEW OF THE TUSKERS IN KRUGER NATIONAL PARK

Document: Tuskers of Kruger NP (region: South) version 7
Updated: October 2017

Region South (Southern region up till Tshokwane)

Purpose of this document is to help you identifying Tuskers you might see in the Kruger NP

Thanks to all people who contributed to this document with their photos.
You will find detailed photos (if available) of the characteristics of the Tuskers like earmarks and tusks.

If you like to see more pictures and impressions of the tuskers you can use this link to my website.

www.tuskersofafrica.com

I hope this will help you with identifying these wonderful creatures of South-Africa.

In case you meet one or more of these Tuskers please send photos to me by using these email addresses:

tuskers@zeelandnet.nl

tuskers2@zeelandnet.nl

tuskers3@zeelandnet.nl

tuskers4@zeelandnet.nl

tuskers5@zeelandnet.nl

This will help to keep this document and the website up-to-date.

With kindly regards,
Aat Vuik
The Netherlands

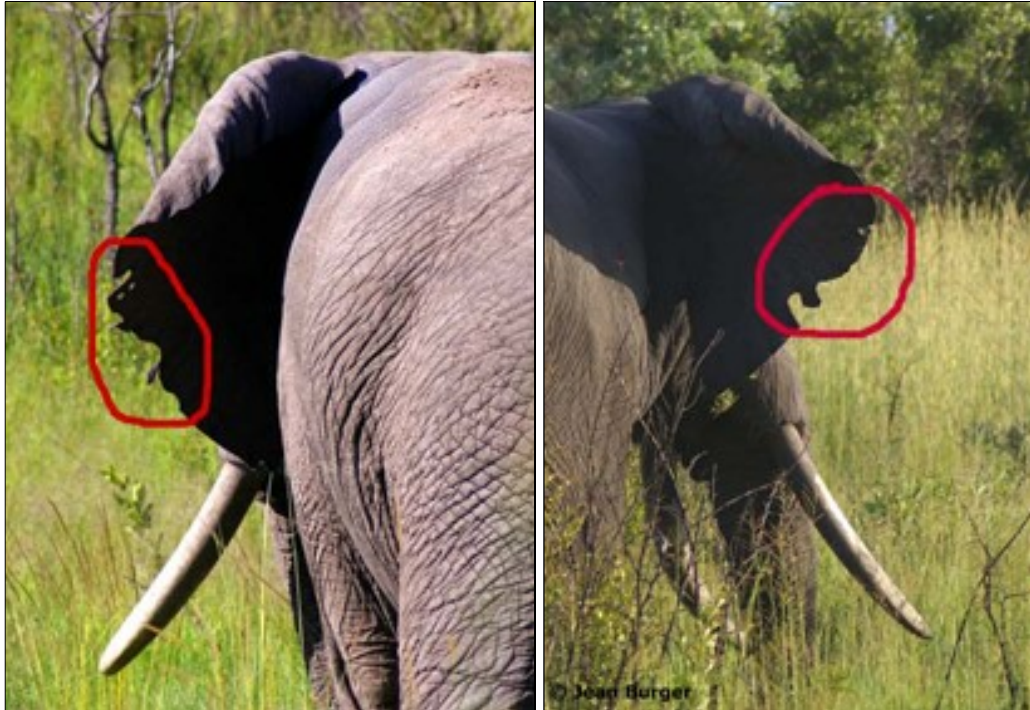
OVERVIEW OF THE TUSKERS IN KRUGER NATIONAL PARK

Tuskers in this document:

Name	Page
FAYI	4
KOMAPITI	5
LEOPOLD	6
KUMANA	7
MAMERLE	8
MAKUNGWE	9
MATRIX	10
METSI-METSI	11
MITOMENI	12
NHLOWA	13
NWANIKU	14
THANDAMAMBA	15
ZAMBHALA	16

OVERVIEW OF THE TUSKERS IN KRUGER NATIONAL PARK

Name	FAYI
Characteristics:	Both tusks almost equal in length. Left ear several notches and loose pieces of skin and two small holes. Right ear a large "W" shaped notch.
Range	Pretoriuskop



OVERVIEW OF THE TUSKERS IN KRUGER NATIONAL PARK

Name	KOMAPITI
Characteristics:	Notch at top of left ear, right ear is clean. Classic shaped tusks, right tusk is a bit longer than left tusk.
Range	Pretoriuskop - Afsaal



OVERVIEW OF THE TUSKERS IN KRUGER NATIONAL PARK

Name	LEOPOLD
Characteristics:	Tusks almost equal in length. Small hole and a loose piece of skin in left ear.
Range	Lower Sabie – Crocodile Bridge



OVERVIEW OF THE TUSKERS IN KRUGER NATIONAL PARK

Name	KUMANA
Characteristics	Left ear: Hole near the center and small piece of loose skin, Right ear: Lower part "ragged" with big notches and tears. Tusks: Thick and widely splayed, right tusk longer than left.
Range	Satara - Tshokwane



OVERVIEW OF THE TUSKERS IN KRUGER NATIONAL PARK

Name	MAMERLE
Characteristics:	A deep medium sized square notch and a v-shaped notch in the middle to lower area of the left ear lobe. At the top of the right ear she has a prominent v-shaped notch
Range	Skukuza – Lower Sabie - Tshokwane



OVERVIEW OF THE TUSKERS IN KRUGER NATIONAL PARK

Name	MAKUNGWE
Characteristics:	MaKungwe is a Cow (Female Tusker). Clean ears. The left tusk is curved upwards. The right tusk is long and more straight and extremely pointing right
Range	Lower Sabie - Crocodile Bridge



OVERVIEW OF THE TUSKERS IN KRUGER NATIONAL PARK

Name	MATRIX
Characteristics:	Matrix is a tusker cow. The left tusk of Matrix is longer than the right tusk.
Range	Tshokwane - Satara



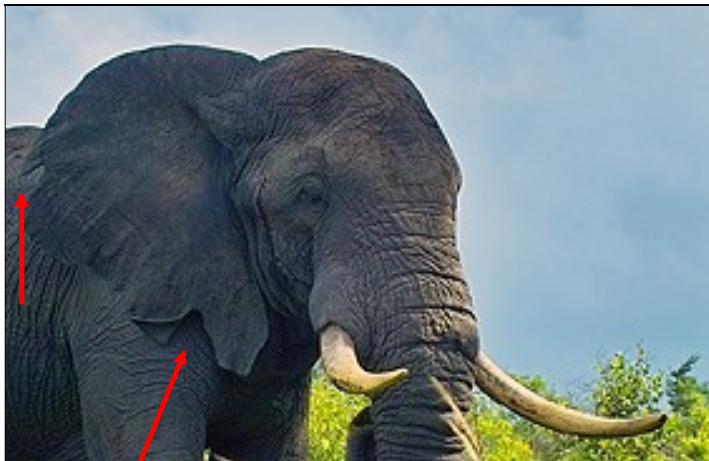
OVERVIEW OF THE TUSKERS IN KRUGER NATIONAL PARK

Name	METSI-METSI
Characteristics:	One tusk (right) small piece of broken left tusk
Range	Tshokwane (Metsi-Metsi) north-east of Tshokwane



OVERVIEW OF THE TUSKERS IN KRUGER NATIONAL PARK

Name	MITOMENI
Characteristics:	Right ear: Wide/large v-shaped notch at the upper part. Left ear: Small v shaped notch at the lower part. Classically shaped tusks, right tusk a bit higher then left one
Range	Skukuza – Lower Sabie



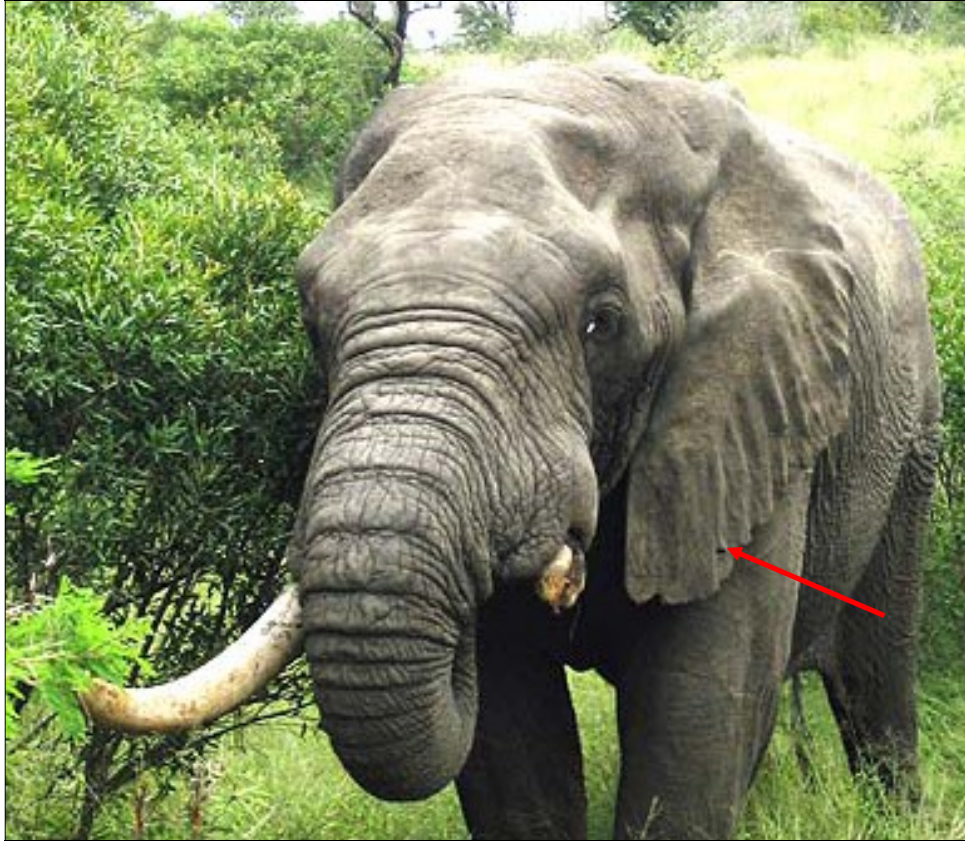
OVERVIEW OF THE TUSKERS IN KRUGER NATIONAL PARK

Name	NHLOWA
Characteristics:	Right ear: Very small notch in right ear (center) and a big tear in the left ear (center) The left tusk has been broken. The right tusk is more straight.
Range	Crocodile Bridge – Lower Sabie - Tshokwane



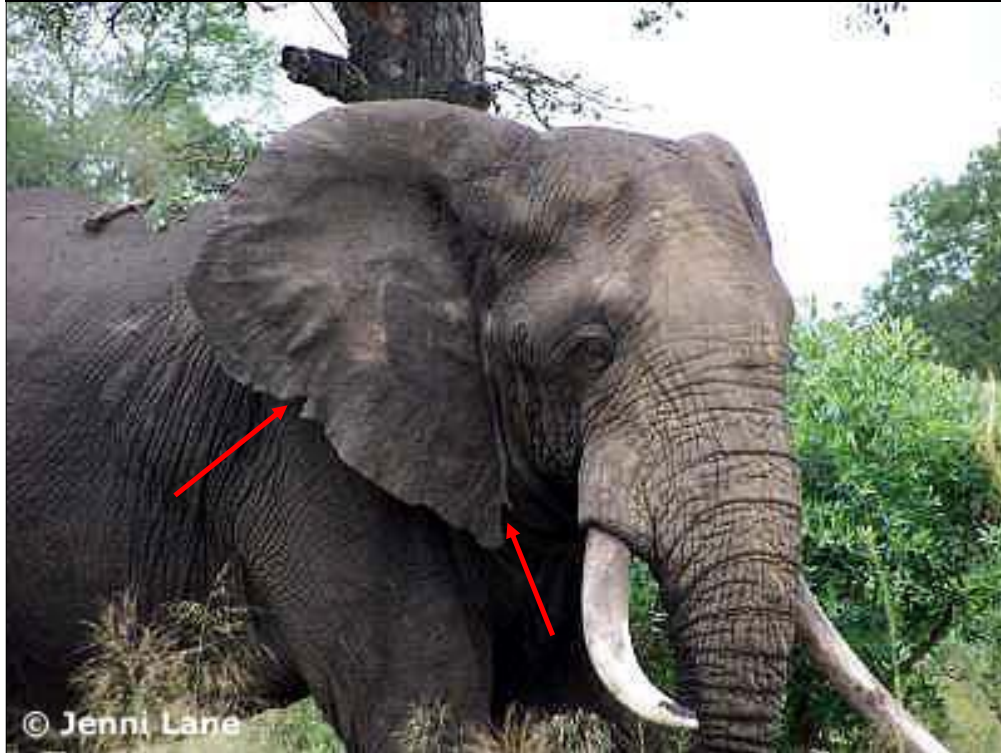
OVERVIEW OF THE TUSKERS IN KRUGER NATIONAL PARK

Name	NWANIKU
Characteristics:	Clean right ear. The left tusk is broken. The right tusk is long and curved.
Range	Skukuza – Mala Mala



OVERVIEW OF THE TUSKERS IN KRUGER NATIONAL PARK

Name	THANDAMAMBA
Characteristics	Heavy / thick splayed tusks. Left tusk straighter and longer than the right tusk. Right ear: several ear notches, V-shaped tear to the center of the ear and a U-shaped notch at the lower part near the neckline
Range	Southern part of the Kruger NP (Malelane- Gardenia Hide - Jock Concession)



OVERVIEW OF THE TUSKERS IN KRUGER NATIONAL PARK

Name	ZAMBHALA
Characteristics:	V-shaped notch in left ear with a small hole just above this notch. Small notch in the right ear (centre). The left tusk is a bit longer and more straight than right tusk.
Range	Between Crocodile Bridge, Afsaal and Tshokwane



Small hole just above notch in left ear



